

**ONLY THE BEST
IS GOOD ENOUGH FOR
YOUR PET!**

SOFT SILICONE for:

- CATS with short hair
- RABBITS, all hair types
- Small breed DOGS with little or no undercoat
- All other small animals



SOFT SILICONE for:

- CATS with long hair
- CATS with thick hair and undercoat
- Small breed DOGS with silky, long hair and soft undercoat



FIRM SILICONE for:

- Large breed DOGS
- DOGS with long hair
- DOGS with double coats
- DOGS with thick coats and undercoats



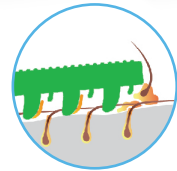
MEDIUM SILICONE for:

- DOGS, most short hair types
- DOGS with short, thick hair
- DOGS with short wiry coats
- DOGS with long silky hair and soft undercoat

**ONLY THE ORIGINAL
PET+ME® IS SO
MULTI-FUNCTIONAL!**



Cares for the coat, leaves it healthy and shiny.



Deep brushing, Massage, Shampooing.



Overall hair removal.



Strengthens the coat and stimulates the hypodermis



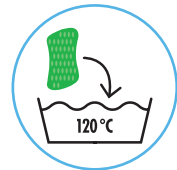
Removes hair from furniture, carpets, car seats and clothing.



Soft massage, relieves tight muscles, stimulates the metabolism and helps healing of muscles, skin and joints.



Excellent for shampooing.



Washable in dishwasher or washing machine.

Vet approved

(USE THIS PLACE FOR YOUR ADDRESS AND LOGO)



Produced in Switzerland by Swiscomed AG
Registered Design No. DM/080050 (WIPO)
www.petandme.ch

**SIMPLY
THE BEST!**

**THE ORIGINAL
SILICONE
BRUSH!**



SWISS MADE

pet+me®

**REVOLUTIONARY
pet grooming brush
for cats · dogs · small
furry animals**



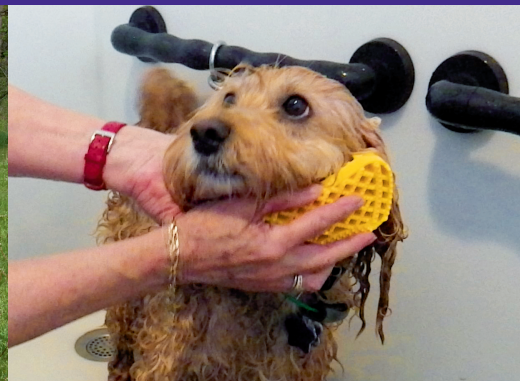
FOR YOUR PET'S HEALTH AND COMFORT

BREED SPECIFIC

Just as human hair varies, so does that of our pets. The **pet+me**® brush took years of extensive scientific research in order to achieve the right design to work effectively on breed specific coats and fur types, including knob lengths, silicone shore (firmness), and pet safety. This includes short and wiry, silky long, no undercoat fur, or very dense fur with a heavy undercoat. Not just for cats and dogs, **pet+me**® has the right brush to choose for all furry animals, including guinea-pigs, rabbits, hamsters, ferrets, and even horses.

SAFE & EFFECTIVE

The **pet+me**® brushes are **only manufactured in Switzerland** and are guaranteed to be 100% pure medical grade silicone, using only safe, pure colors in the manufacturing process. These flexible brushes are soft on sensitive skin, yet highly effective in removing fur and scales. Recommended by veterinarians and breeders, **pet+me**® can be used around sensitive areas such as the eyes, ears, mouth and underbelly without harm. It can safely be given to small children to brush an animal without harm to either of them.



MULTI-FUNCTIONAL

The **longer knobs side** is used for optimal hair removal and for removing scale from dogs and dander from cats.

Dogs; have sebaceous glands at the hair roots. When the upper layer of excess sebum dries and hardens scales form, creating an unpleasant smelling layer. This layer can often produce an irritating itch that causes the dog to scratch with constant discomfort.

Cats; have dry skin and dander. They are their own personal groomers, but the excess loose fur frequently is digested, creating fur-balls. Some areas are difficult for cats to self-groom.

This is also the side to be used for massaging. Pressure can safely be applied with **pet+me**® to stimulate blood circulation and help promote a healthy, shiny, coat.

The **shorter knobs side** is used wet or dry to remove loosened hair from the surface of the animal's coat. This side is also excellent for removing hair from upholstery, carpets and fabric. By applying pressure, you can remove even the shortest of hair or lint. It is also excellent if used on fabric car seats!

WET APPLICATIONS

When **pet+me**® is wet, it glides easily through the coat creating a magnetic effect to remove fur, scales and dander.

Because cat fur may create static electricity, we recommend that for the first few brushings to very lightly dampen the brush for greater comfort to your pet.

Bathing time is the perfect time for **pet+me**®. The long knobs side of the brush assists in deeply and evenly

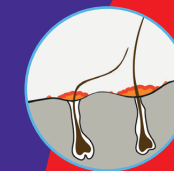
distributing shampoo into the entire fur of your pet. It is especially recommended and effective when using medicated shampoos.

SIMPLE TO CLEAN

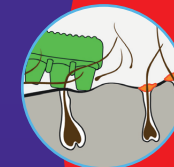
Cleaning **pet+me**® is easy. Simply hold it under running water and rinse. For optimal washing and sanitizing, toss it into the dishwasher or washing machine. It can be washed in very hot water. The **pet+me**® medical grade silicone endures up to 120 °C. These durable brushes come out looking like new and are guaranteed for a long life of use without discoloring, cracking or breaking.



PAINLESS SEBUM REMOVAL



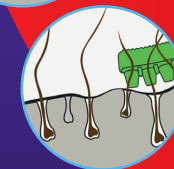
Dogs have sebaceous glands at the hair roots. When the upper layer of excess sebum dries and hardens, scales form an itchy and unpleasantly smelling layer.



Firm pressure can be applied without hurting the animal. The **pet+me**® is able to reach and loosen the encrusted sebum.



The now loosened sebum will cling to the silicone brush.



The smelly, irritating sebum is removed; the skin can breathe, leaving the coat clean healthy and shiny.